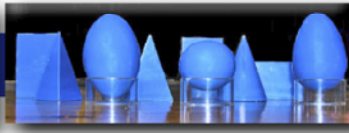




# Wilmington Montessori School



## WEDNESDAY WEEKLY

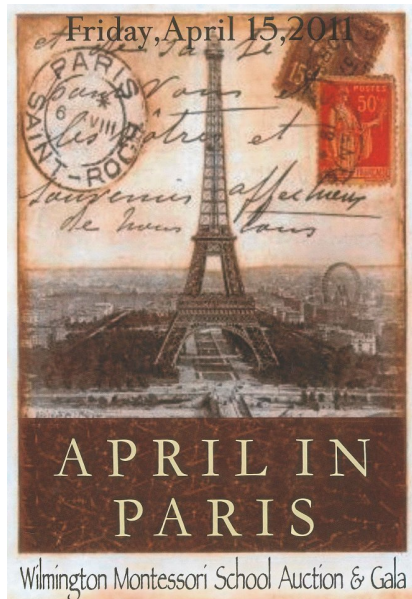
### April in Paris: Auction & Gala

**Brandywine Country Club  
Friday, April 15, at 7 p.m.**

Only two days until the big night, so get out your can-can dresses and get ready for a night of fun, friends, fantastic (and plentiful) **food**, drinks, and amazing deals!

Today is the last day for pre-sales, so track down Jenn Burns ASAP ([jennifer\\_burns@wmsde.org](mailto:jennifer_burns@wmsde.org) or 302-475-0555). Remember, ticket prices increase at the door!

It's impossible to highlight all of our great auction items, but here are just a few of our favorites:



- An official NFL football, signed by Eagles wide receiver and Pro Bowler DeSean Jackson
- The opportunity for your child to be WMS's Head of School for the day
- A ride to school in a police car—without breaking any rules!
- A hand-crafted dress, jacket and flower headband designed by our very own (and very talented) Elena Kirifides
- A four-course dinner at Philadelphia's acclaimed Le Bec-Fin
- A 4th generation 32GB iPod Touch
- Sports tickets—for the Phillies and Philadelphia Union
- Priceless classroom gifts, including a hand-braided rug, a book of "Beautiful Thoughts," and lots of other beautiful art from your children

Check out your auction catalog today, and don't forget that we also have some amazing last-minute gifts that will appear in our addendum on auction night. We hope to see all of you there!

**A special thanks to everyone who bid on items for the Cyber Auction—we raised more than \$6,000! Congratulations to all of our winners. Some unsold items will be auctioned on Friday Night so if you forgot to bid, you still have a chance!**

### MARK YOUR CALENDARS

#### April

- 11-15 ERB Testing
- 15 April in Paris Auction & Gala  
Brandywine Country Club, 7 p.m.
- 18-22 TV Turn-off Week!
- 18 Montessori Monday—*Tell a friend!*  
Lobby, 9:30 a.m.
- 18 The Journey  
Lobby, 8:30 a.m.- noon
- 20 3-Day Preschool Spring Concert  
Gym, 9:30 a.m.
- 21 Earth Day Celebration
- 22 Good Friday—NO CLASSES  
NO CHILDCARE
- 25 Easter Monday—NO CLASSES  
Pre-registered childcare only  
Contact [cass\\_winner@wmsde.org](mailto:cass_winner@wmsde.org)
- 27 Camp Demo Day  
Great Room, 3 p.m.
- 28 Infant/Toddler Spring Sing Fling  
11 a.m.
- 29 Arbor Day Tree Planting  
Outside WMS, 11 a.m.

#### May

*(Toddler conferences will be held throughout the month during classes.)*

- 2 Montessori Monday—*Tell a friend!*  
Lobby, 9:30 a.m.
- 3 Moms Day—Details TBA
- 6 All Staff Professional Day  
NO CLASSES  
Preregistered Childcare only  
Contact [cass\\_winner@wmsde.org](mailto:cass_winner@wmsde.org)
- 9 New Family Reception



## *Under the Sea*

Room 16 has transformed the WMS lobby into the Great Barrier Reef! Stop by and meet a variety of sea creatures, including a spotted dolphin, giant clam, clownfish, flying fish or hammerhead shark (don't worry—he doesn't bite)! Visit our Facebook page at <http://www.facebook.com/WilmingtonMontessoriIDE> for more photos!



## Celebrate Earth Day & Arbor Day at WMS



This year, WMS will celebrate Earth Day on Thursday, April 21. Leading up to our school-wide celebration, students will have the opportunity to submit a declaration of what they do for our planet Earth. In exchange, they will receive an iron-on transfer of a special edition WMS Earth Day logo designed by our own Mark Bomgardner.

On the 21st, we invite all of our classrooms to join us for a spring cleaning of our campus. Then, on the 29th, we will continue the festivities with an Arbor Day celebration. We will be accepting donations for the purchase of a lovely, native tree (or trees) to be planted by the WMS community on Arbor Day.

We encourage everyone to join us at 11 a.m. on April 29 at the Preschool Playground and to wear shirts displaying the Earth Day logo they received during the previous week.

More details will follow!

-The Grounds Committee



# What Parents Need to Know about the ERBs

If you have a child in third through sixth grade, you know that this week is a very different one for our students. Instead of the typical open classroom time, collaboration, small group lessons and assignments, students are hunkered down at desks every morning, filling in bubbles that only they will see. We are in the midst of ERB week right now at Wilmington Montessori School and many parents are wondering two things: "What are the ERBs?" and "How does WMS use standardized tests?"

## What are the ERBs?

The ERB (Educational Record Bureau) is a non-profit organization that provides standardized testing for independent and public schools throughout the country. The test our students take is comprised of 10 subtests that measure achievement in reading comprehension, vocabulary, writing mechanics, writing concepts and skills, and mathematics. These subtests measure how well a student is learning the skills in the curriculum.

While it is not a direct match to the Montessori curriculum, the ERBs cover many of the same concepts. It also measures verbal and quantitative reasoning, which gives us information about a child's ability to handle higher-order thinking.

## How does WMS use standardized tests?

The school as a whole uses ERB results to evaluate how well it is doing in teaching these specific skills to children. As a way to evaluate the school, we look at the whole group of students to determine how the program fares compared to other schools across the country. We look at the data from each of the content areas every year to determine areas of strength and areas of opportunity for our school program. Additionally, standardized tests help

teachers determine strengths and needs of the individual students. In the late summer, after the ERB scores have been reported to the school and to parents, our teachers sit down and analyze scores, comparing them to what they know about each individual child's classroom performance, and also comparing the achievement to the reasoning subtests.

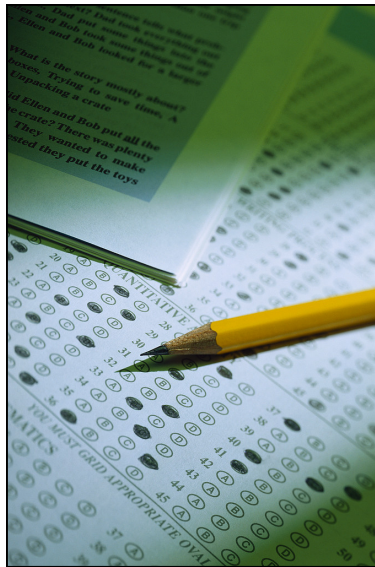
One thing to always keep in mind is that the ERBs are only one piece of the puzzle. Classroom work, classroom assessments and teacher observations are all incredibly important in gleaning who a child is as a learner; this is one more piece to the puzzle. The ERBs can serve as another measure to confirm a strength or challenge. When it comes to student learning, more information is better.

The creators of the ERBs caution us to look at information over time. One year's worth of test data is interesting, but it is really patterns over time that are important. The first year of information is used simply as a baseline and to get the children used to taking this type of a test. By the third year, we begin to see trends with children that tend to correlate with classroom performance. As students grow and change, annual testing is one way to help teachers and administrators

keep track of that change over time.

So, while the children are thinking about extra recess between the tests and yummy snacks during their break (the two most exciting things about ERB week in the kids eyes), we adults are happy to have one more piece of information to help us learn about the school and the students as learners.

Please contact Liz Madden at [liz\\_madden@wmsde.org](mailto:liz_madden@wmsde.org) if you have any questions about assessment or testing.



## WMS Musicians Celebrate Earth Day

This Saturday, talented WMS musicians Tatum Schutt (singing) and Chris Cooke (singing and steel drums) will be performing between 1 and 3 p.m. at the Delaware Nature Society's Earth Day Celebration.

The event, which will be held at the Russell W. Peterson Urban Wildlife Refuge on the Wilmington Riverfront from 10 a.m. until 3 p.m., also includes canoe rides, a scavenger hunt, live animals and other fun activities for all ages.

Delaware Nature Society's Earth Day Celebration is free and open to the public. [Click here for directions.](#)



## 3-Day Preschool Spring Concert—April 20

Watch our WMS preschoolers enthusiastically sing and dance next Wednesday at our annual spring concert. The show will start promptly at 9:30 a.m., so be sure to come early to ensure great seats for watching your child perform!



## Are you ready to go on The Journey?

### What is The Journey?

The purpose of The Journey is to provide parents with an understanding of WHY and HOW Montessori works by enabling them to see the classroom, first as an observer, then as a participant with the materials and lessons. During this experience, you will discover, much as a child does, the beauty of Montessori.

### When and where is The Journey?

*For your convenience, The Journey is now being held on Mondays!*

**Monday, April 18**

**8:30 a.m.—noon**

The Journey will begin in the lobby and then we will travel throughout WMS.

### Who should participate in The Journey?

When parents understand why and how Montessori works, you are better able to support teachers' efforts, provide consistency at home, and enable your children to get the most out of their Montessori education. WMS strongly encourages ALL parents, especially those new to the school, to experience The Journey.

### How do I register for The Journey?

Call or e-mail Theresa Conaty to reserve your spot. You can reach Theresa at 302-475-0555 or [theresa\\_conaty@wmsde.org](mailto:theresa_conaty@wmsde.org). Registration is free and you receive **five co-op** hours per family. Childcare is available by pre-registering with Cass Winner at [cass\\_winner@wmsde.org](mailto:cass_winner@wmsde.org) or 302-475-0555.

## Montessori Mondays

Know a great family looking for a school for their 1-4 year old? Invite them to attend one of our Montessori Mondays. **Don't forget, you can earn a \$750 tuition credit or 30 co-op hours by referring a friend to WMS.** (Login and visit [www.wmsde.org/buildingcommunity](http://www.wmsde.org/buildingcommunity) for details.)

At a Montessori Monday, parents have the opportunity to spend a morning at WMS watching their child explore a Montessori classroom and its materials and will also have the chance to speak to a WMS teacher.

**Upcoming dates (9:30 a.m.):** April 18 and May 2

For more information or to reserve your spot, contact Theresa Conaty at 302-475-0555 or [theresa\\_conaty@wmsde.org](mailto:theresa_conaty@wmsde.org).

## WEDNESDAY WEEKLY SUBMISSIONS

Have a submission for the Wednesday Weekly?

E-mail [Wednesday-Weekly@wmsde.org](mailto:Wednesday-Weekly@wmsde.org) by 4:30 p.m. Friday each week for possible publication in the following week's issue.

Note: Submissions may be modified for space constraints and/or content clarity.

follow us on  
**twitter**



[www.twitter.com/wmsde](http://www.twitter.com/wmsde)



[www.facebook.com/WilmingtonMontessoriDE](http://www.facebook.com/WilmingtonMontessoriDE)

### Our Mission

*Wilmington Montessori School is a collaborative learning community rooted in Montessori principles, inspiring the joyful discovery of self and a passion for learning and independent thinking. We empower children to be knowledgeable and responsible contributors to the global community.*