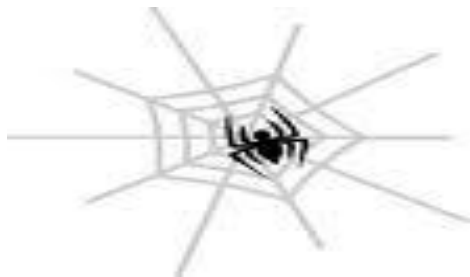




## WEDNESDAY WEEKLY



### Halloween Parades!

Halloween Parades will take place on Thursday, October 28<sup>th</sup>. Mark the calendar, find a costume and get ready to watch WMS students parade their Halloween best!

Parades take place at the following times: 9:30 a.m. for Preschool; 11:15 a.m. for Elementary.

Each class will parade around the gym once to show off costumes and then along the following route: down the hallway past the front desk, down to Cass' office around by the Elementary aftercare rooms, around the loop by Rooms 15/16 and back to classrooms.

Families, friends and classrooms are invited to line the hallways along the parade route and then to join students in their classrooms for refreshments. Other students are also encouraged to line the hallways to watch the parade as well.

**Note:** Please make sure that costumes meet the following requirements:

- No weapon of any kind.
- No blood, guts, or gore.
- Apply hair color & makeup at home.
- Nothing should frighten small children.



### MARK YOUR CALENDARS

Oct. 24-27	6 <sup>th</sup> Grade Trip to Global Citizenship Action Project in NYC
Oct. 28	Halloween Parades Preschool 9:30 a.m./Elementary 11:15 a.m.
Nov. 3	Parent Workshop with Yvonne Nass Surviving the Challenge of Parenthood 9:30 a.m. on Wednesday <u>for six weeks</u>
Nov. 4	"First Look" Rummage Pre-sale for Volunteers – Great Room 6:00 p.m.-8:00 p.m.
Nov. 5	WMS Community Rummage Pre-Sale Great Room 3:00 p.m.-6:00 p.m.
Nov. 6	Rummage Sale - Open to Public Great Room 7:00 a.m.- 1:00 p.m.
Nov. 11	Parent Workshop: Kindergarten Readiness 9:00 a.m.
Nov. 12	Movie Morning! Diversity Advisory Committee Room 26
Nov. 13	The Journey 8:15 a.m.-3:15 p.m.
Nov. 14-17	AMS Reaccreditation Visit
Nov. 16	Town Meeting 9:15 a.m. in the Great Room
Nov. 24	Thanksgiving Break Classes closed; Childcare only
Nov. 25 & 26	Thanksgiving Break Classes closed; Building closed

## Rummage Sale News

We want you! We especially want you if you have muscles and a pick up truck. Several people have mentioned that they have large items to donate, but no way to transport them to school. If you have access to a truck and could lend support this way, it would be a huge help. We hope to offer deliveries directly to the Great Room this coming weekend and early next week (Saturday, Oct 30-Wednesday, November 3rd).

**Donations** Only one week remains to clean out your closets, basements and attics! Due to the high cost of disposal, however, please bring us only items in very good, re-sellable condition. Thank you to all who have already done so--there is a ton of great stuff waiting to be reused!

**Drop-off Schedule** The Pod will be open every day this week at 8 am. Next week items should be delivered directly to the Great Room.

**Co-op Opportunities** Check co-op board for details on how you can help out in the following ways:

- Oct. 31<sup>st</sup> from 10:00 a.m. – 1:00 p.m. **“Move In Day”**
- Nov 1<sup>st</sup> through 4<sup>th</sup>, 8:30 a.m.-8:30 p.m. **“Sorting and Pricing”**
- Provide a meal for volunteers.
- Work at the Pre-Sales and Sale

### Other Important Dates

- ✓ Nov. 4<sup>th</sup>: **Wine & Cheese** Pre-Sale 6 p.m.– 8 p.m. Rummage Sale Volunteers Only
- ✓ Nov. 5<sup>th</sup> the sale opens up to **WMS families** from 3 p.m. – 6 p.m.
- ✓ Nov. 6<sup>th</sup> the sale opens up to the public at 7a.m.

Contact Carol Thomson [crthomson3@comcast.net](mailto:crthomson3@comcast.net) for details.



### The Journey

*Experience Your Child's Day and Their Learning Environment*

**Saturday, November 13<sup>th</sup>; 8:15am-3:15pm**

Experience the Montessori educational process and better understand the teaching methods. Beginning in the toddler classrooms, you will see how each program level builds and supports educational development through 6th grade. Through hands-on lessons and observation, learn what makes Montessori education an extraordinary way to teach... and learn.

**Register with Denise Knoff**

**([denise\\_knoff@wmsde.org](mailto:denise_knoff@wmsde.org); (302) 475-0555)**

**5 co-op hours for participation; Child care available**

### Parent Education Workshop

**Surviving the Challenge of Parenthood**

Share and explore how we can:

- encourage independence
- invite cooperation
- have a child learn to listen
- set boundaries and become more consistent
- raise a problem solver instead of a problem
- lower stress within the family
- redirect misbehavior and much, much more.

Bring a neighbor, a friend, a co-parent, extended family and whoever might be interested.

Presented by: Yvonne Nass ([mynass@aol.com](mailto:mynass@aol.com))

**Wednesdays beginning November 3<sup>rd</sup>; 9:30 a.m.**

**Note new dates: 11/3; 11/10; 11/17; 12/1; 12/8; 12/15**

**\$80 per person (\$130 per couple)**

**Register at the Front Desk**

### Our Mission

Wilmington Montessori School is a collaborative learning community rooted in Montessori principles, inspiring the joyful discovery of self and a passion for learning and independent thinking. We empower children to be knowledgeable and responsible contributors to the global community.

### Wednesday Weekly Submissions

*E-mail to [Wednesday-Weekly@wmsde.org](mailto:Wednesday-Weekly@wmsde.org) by **COB Friday** for publication the following week. Submissions may be modified for space constraints and/or content clarity.*

## American Montessori Society (AMS) and Middle States (CES-MSA) Reaccreditation Visit

Over the past year, WMS has engaged in a self-study required for reaccreditation by the AMS and Middle States. As part of this process, a school spends time examining itself in light of its own philosophy with involvement by all of its constituents. This process began several years ago with the visioning and long-range planning that the Board and school community embarked on in 2007. This year, the school completed a self-study related to how we address the standards of AMS and Middle States. Those interested in examining the process and results of the WMS self-study can find them documented in notebooks placed in the front lobby.

With the self-study complete, WMS now looks forward to the visit in anticipation of reaccreditation. During November 14-17, the AMS-Middle States team will visit our school to confirm the self study and follow up with any questions. During that week, you might see the visiting team in hallways and classrooms. They will also attend the Town Meeting on November 16<sup>th</sup>. We hope you will come prepared with thoughtful insights about our school.



### HELP WESTSIDE HEALTHCARE

Two WMS efforts are going on to benefit Westside Family Healthcare, which provides high quality health care services to uninsured and underinsured children and adults in Wilmington.

**Collecting Coats for All Ages!** Rooms 22 and 24 are collecting gently used jackets and coats during October. Donations provided by WMS families support Westside and help other families in need. Donation bins are located at the school's main entrance. Contact Amanda Lewis ([aamlewis@hotmail.com](mailto:aamlewis@hotmail.com)) with questions.



**Bring Your Books!** Girl Scout Troop 177 is collecting gently used books for children ages newborn-10 that can be taken home to keep after a visit. The Troop is also collecting new books to be used during physicals and evaluations to assess children in a relaxed and enjoyable manner. (Please seal new books in a ZIPLOCK BAG to keep them germ free!) Book drop boxes are located at both school entrances. Taking place through November 6<sup>th</sup>, this effort also helps Troop 177 advance towards achieving a Bronze award, which centers around community service.



### Diwali Mela: An Indian Market Fair

Thanks to the many families who volunteered their time and talent to make Diwali Mela such a success!

